

The Journey of the Marble

What makes a good marble run?



A good marble run allows the marble to travel slowly from the top to the bottom of the run. When making a marble run, designers try to make the journey as long as possible.

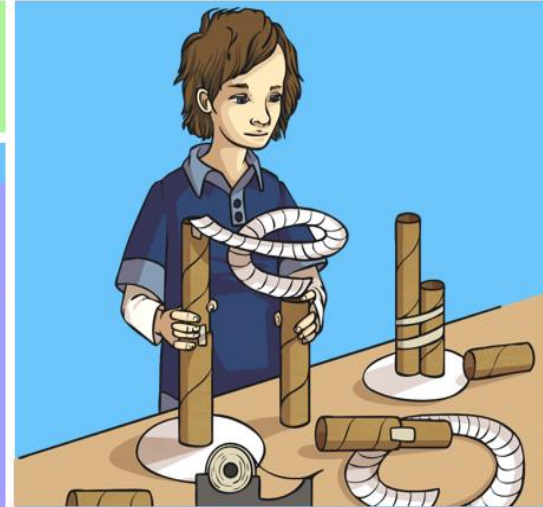


The Journey of the Marble

Your task today:
design your own
marble run!

It needs to include:

- 2 vertical towers
- 1 bridge that joins the 2 towers
- Joins that are strong, tidy and allow the marble to run



Joining



The ends of the cardboard tube are shaped and small cuts are made to help the tube to fan out and accurately fit the other tube.

A small, thin half tub catches the marble and directs it down the bridge.



Joining



Making Bridges



Apply the techniques that have been demonstrated to help you make your own marble run bridge.

Remember to select the best tools and equipment for the job.



Making Bridges



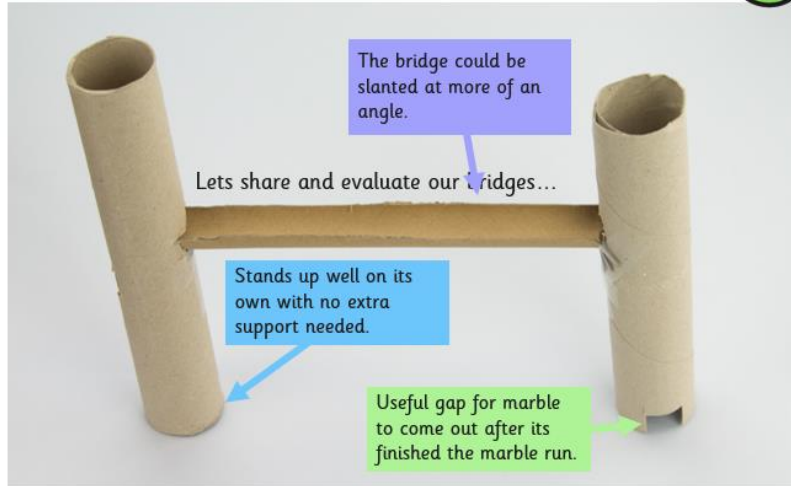
Craft knives are a useful tool to help cut paper or card very accurately.

Health and Safety

Craft knives are extremely sharp and should only be used under close supervision of an adult. Always use a metal ruler and a cutting board when cutting when using a craft knife. Keep your hand far away from the blade. Remember to place the cover back on the knife after you have used it.

Photo courtesy of Owen Wilkinson @iStock.com - granted under creative commons license - attribution

Evaluating the Bridges



The bridge could be slanted at more of an angle.

Lets share and evaluate our bridges...

Stands up well on its own with no extra support needed.

Useful gap for marble to come out after its finished the marble run.